



TURTLE RIB®
DRY-JOINT RAINSCREEN SYSTEM

NFPA 285 TESTED

TURTLE RIB®
RAINSCREEN WALL ASSEMBLY

Tested with **ALPOLIC® FR ACM**,
Mineral Wool Insulation and
Turtle Rib® Attachment Technology

NFPA 285 RESULTS



FLAME HEIGHT

Observed: **6 ft**
Allowable: **10 ft**



PASS



EXTERIOR FACE TEMP.

Maximum: **407°F**
Allowable: **1000°F**



PASS



AIR CAVITY TEMP.

Maximum: **311°F**
Allowable: **1000°F**



PASS



SECOND STORY TEMP.

Maximum: **128°F**
Allowable: **583°F**



PASS

FULL-SCALE NFPA 285 TESTING AT INTERTEK BUILDING & CONSTRUCTION, ELMENDORF, TEXAS



**NFPA 285
COMPLIANT
ASSEMBLY**

Tested as a complete
wall assembly.



**DRY-JOINT
RAINSCREEN
DESIGN**

Pressure equalized cavity
with internal drainage.



**NONCOMBUSTIBLE
MINERAL WOOL
INSULATION**

4" **ROCKWOOL®**
Cavity Rock®



**REDUCED
THERMAL
BRIDGING**

Intermittent thermal
isolation spacers.



**DESIGN
FLEXIBILITY**

Concealed, exposed
and hybrid panel
modes.



TURLERIB.COM

NFPA 285 TESTED

AAMA 508 TESTED

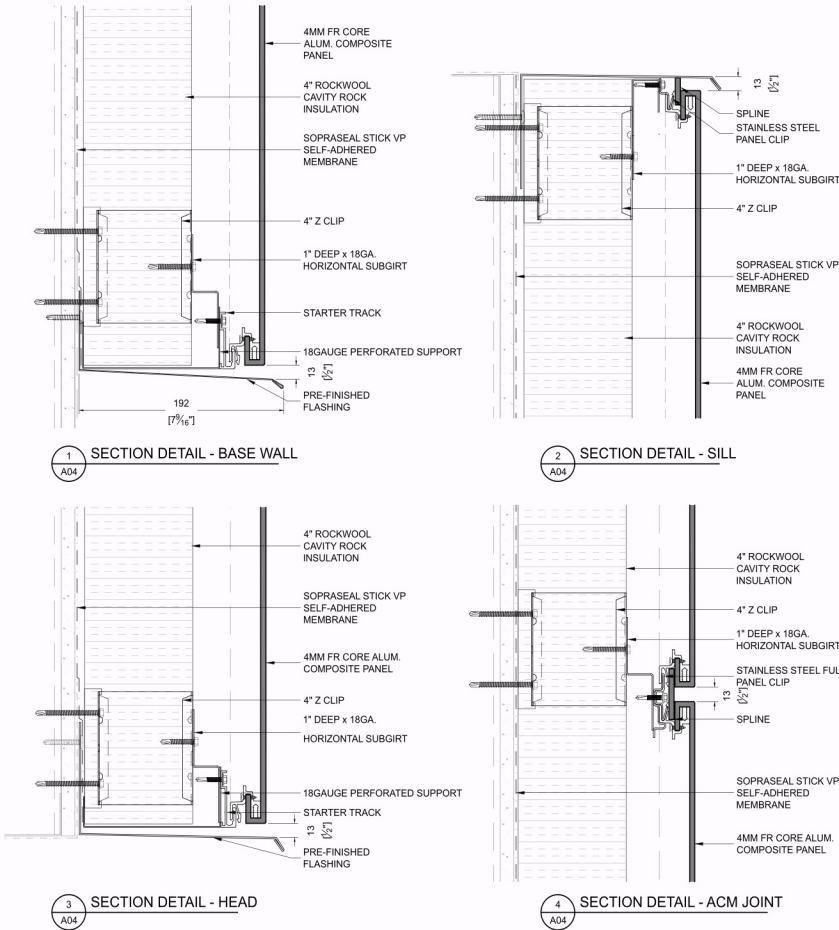
PATENT PENDING

ONE OF THE COOLEST WALLS TESTED.

The Turtle Rib® rainscreen wall assembly successfully met the performance requirements of NFPA 285, demonstrating controlled flame propagation, low exterior surface temperatures, and protection of upper-story occupants.



TESTED ASSEMBLY DETAIL



TESTED ASSEMBLY COMPONENTS

- ALPOLIC® FR Core ACM Panel
- Turtle Rib® Stainless Snap-Fit Clip
- 18 Gauge Horizontal Support Rail
- 4" ROCKWOOL® Cavity Rock® Insulation
- Intermittent Thermal Isolation Spacer & Support Profile
- Air / Water Barrier
- Backup Wall

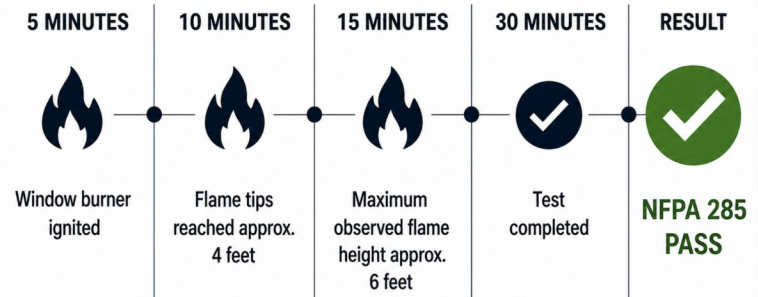
NFPA 285 PERFORMANCE SUMMARY

REQUIREMENT	OBSERVED RESULT	ALLOWABLE LIMIT	RESULT
Flame Height	6 ft	10 ft	✓ PASS
Lateral Flame Spread	Contained	Within 5 ft of centerline	✓ PASS
Exterior Face Temperatures	407°F Max	1000°F	✓ PASS
Air Cavity Temperatures	311°F Max	1000°F	✓ PASS
Second Story Temperatures	128°F Max	583°F	✓ PASS

NFPA 285 COMPLIANCE ✓ **PASS**

Data derived from Intertek Report G105700511SAT-002 R0

TEST SCENARIO TIMELINE*



* Based on observations recorded during Intertek testing.

