

Design No. BAC/CWP 30-01
Alpolic® FR ACM with Turtle Rib™ Panel System NFPA 285
Rating: Meets the Conditions of Acceptance

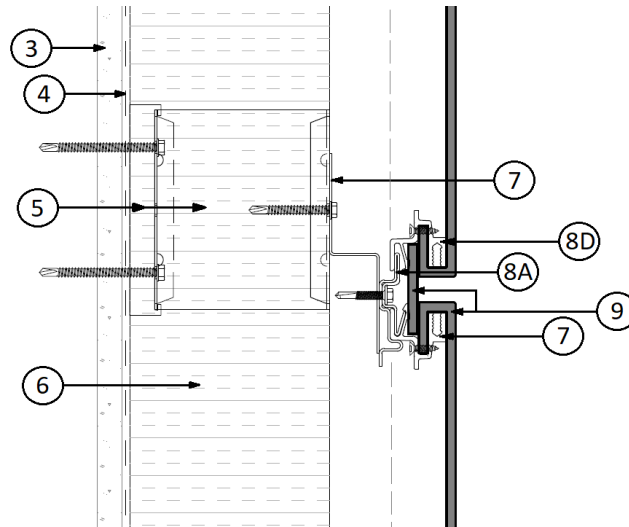


FIGURE 1 – ACM JOINT

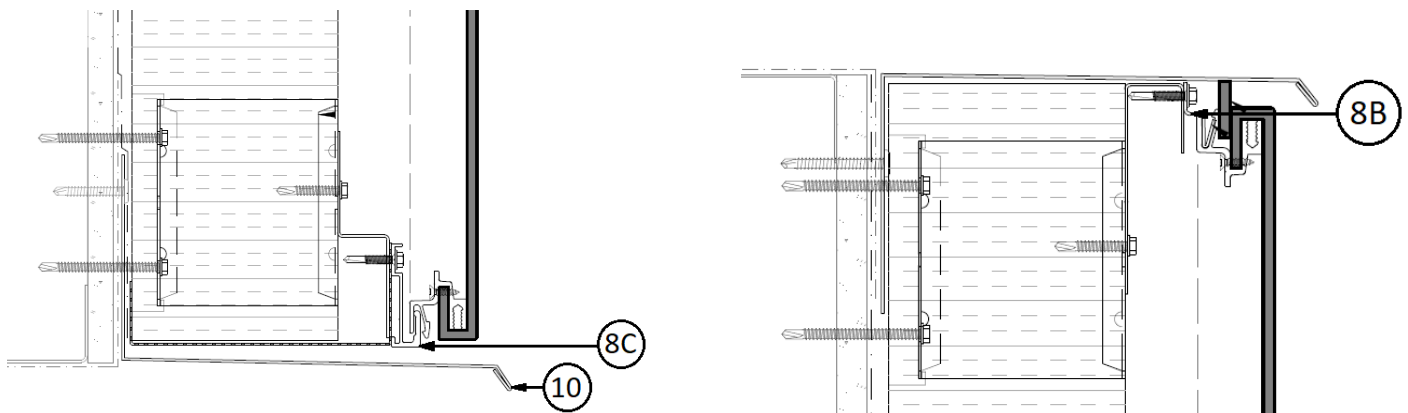


FIGURE 2 – FLASHING DETAILS

1. STEEL FRAMING (Not Shown): Install min. 18 GA steel studs with 6 in. depth at a max. spacing of 16 in. on center (oc). Attach steel studs to 18 GA top and bottom steel tracks using #6 x 1/2 in. self-drilling screws.

2. INTERIOR GYPSUM (Not Shown): Install one layer of 5/8 in. thick Type X gypsum board to the interior side of the steel framing. Fasten using drywall screws (sufficiently long to fully penetrate the board) spaced 8 in. oc around the perimeter and 16 in. oc in the field.



3. **EXTERIOR GYPSUM:** Install one layer of 5/8 in. thick Densglass exterior wall sheathing to the exterior side of the steel framing. Fasten using drywall screws (sufficiently long to penetrate the sheathing) spaced 8 in. oc around the perimeter and 16 in. oc in the field.
4. **AIR BARRIER MEMBRANE:** Adhere one layer of Soprema SOPRASEAL STICK VP self-adhered membrane over the exterior gypsum per manufacturer's installation instructions.
5. **CERTIFIED PRODUCT:** Thermal Wall Bracket

Fasten 4 in. Clip to the exterior gypsum using 14 x 2-1/2 HWH screws spaced 16 in. horizontally and 32 in. vertically.
6. **INSULATION:** Install 4 in. thick ROCKWOOL Cavity Rock insulation over air barrier and between Z clips. This creates a 1 in. gap between the insulation and exterior cladding. The insulation is dual-density: 6.2 lb/ft³ on the outer layer and 3.8 lb/ft³ on the inner layer.
7. **HORIZONTAL GIRTS:** Fasten 1 in. deep, 18 GA horizontal Z-Girts and J-Girts to Clip using 14 x 7/8 HWH screws.
8. **EXTRUSION SYSTEM:** Includes the following components:
 - A. **FULL CLIP** – Fasten the Turtle Rib™ stainless-steel full clip to the Z-Girts using #10-16 x 3/4 in. self-drilling pan-head screws.
 - B. **HALF CLIP** – Fasten the Turtle Rib™ stainless-steel half clip to the J-Girts using #10-16 x 3/4 in. self-drilling pan-head screws.
 - C. **STARTER TRACK** – Fasten the Turtle Rib™ starter track to the Z-Girts through a 22 GA perforated support, using #10-16 x 3/4 in. self-drilling pan-head screws at the base of the wall and above window opening.
 - D. **PRE-INSTALLED EXTRUDED PANEL FRAME** – Turtle Rib™ aluminum extrusions fastened into the panel using flat-head #8 x 3/4 in. self-drilling screws. Perimeter intersections are tack welded.
 - E. **PRE-INSTALLED EXTRUDED PANEL STIFFENER (Not Shown)** – Turtle Rib™ aluminum extrusions tack-welded to the panel frame at a max. spacing of 32 in. along the short direction.
9. **EXTERIOR CLADDING:** 4mm Alpolic® FR ACM panel with an FR core and pre-installed panel frame and panel stiffeners installed onto half-clips, full-clips, or starter tracks. A 4mm Alpolic® FR ACM panel spline is inserted within the extrusion. Use only 4mm FR core ACM panels bearing an Intertek Certified Label and meeting the following min. requirements – NFPA 285.
10. **FLASHING:** Fasten 22 GA aluminum flashing with 7-9/16 in. drip edge around window opening and at the top and bottom of the wall.

Consult the listing report on the Directory of Building Products (<https://bpdirectory.intertek.com>) for the edition of the standard(s) evaluated.

Compliance of the assembly described in this Design Listing with the referenced standard relies on verification that the assembly constructed in the field is consistent with that described herein. Intertek certified products may be verified by the approved Intertek label; other products must be verified by the Authority Having Jurisdiction as meeting the specifications stated herein.